



**Rail Cargo Carrier – Croatia
d.o.o.**

Rail Cargo Carrier - Croatia d.o.o. – RU as a member of ÖBB

The name of Company (official)
Rail Cargo Carrier-Croatia, d.o.o.



Headquarters

**Radnička cesta
39 HR- 10000
Zagreb**



Proxy
Zlatan Dergez

Managing directors
**Ivan Šenkiš, Petar
Pokrovac**

Date of
establishment
23.08.2013.



The beginnings

2014

Certificate B
for RCC HU in HR

6/2014

Certificate B
for RCC HU in HR

6/2014

Our own license to
work in Croatia

7/2014

Homologation of
our first 1216
locomotive

10/2014

Our own
A certificate

12/2014

2015

Our own
B certificate

3/2015

Homologation
of our first 1063
locomotive

3/2015

Our first commercial
train from Dobova to
Gyékényes

31/3/2015



The new beginnings...

2023

Single Safety
Certificate

1/3//2023

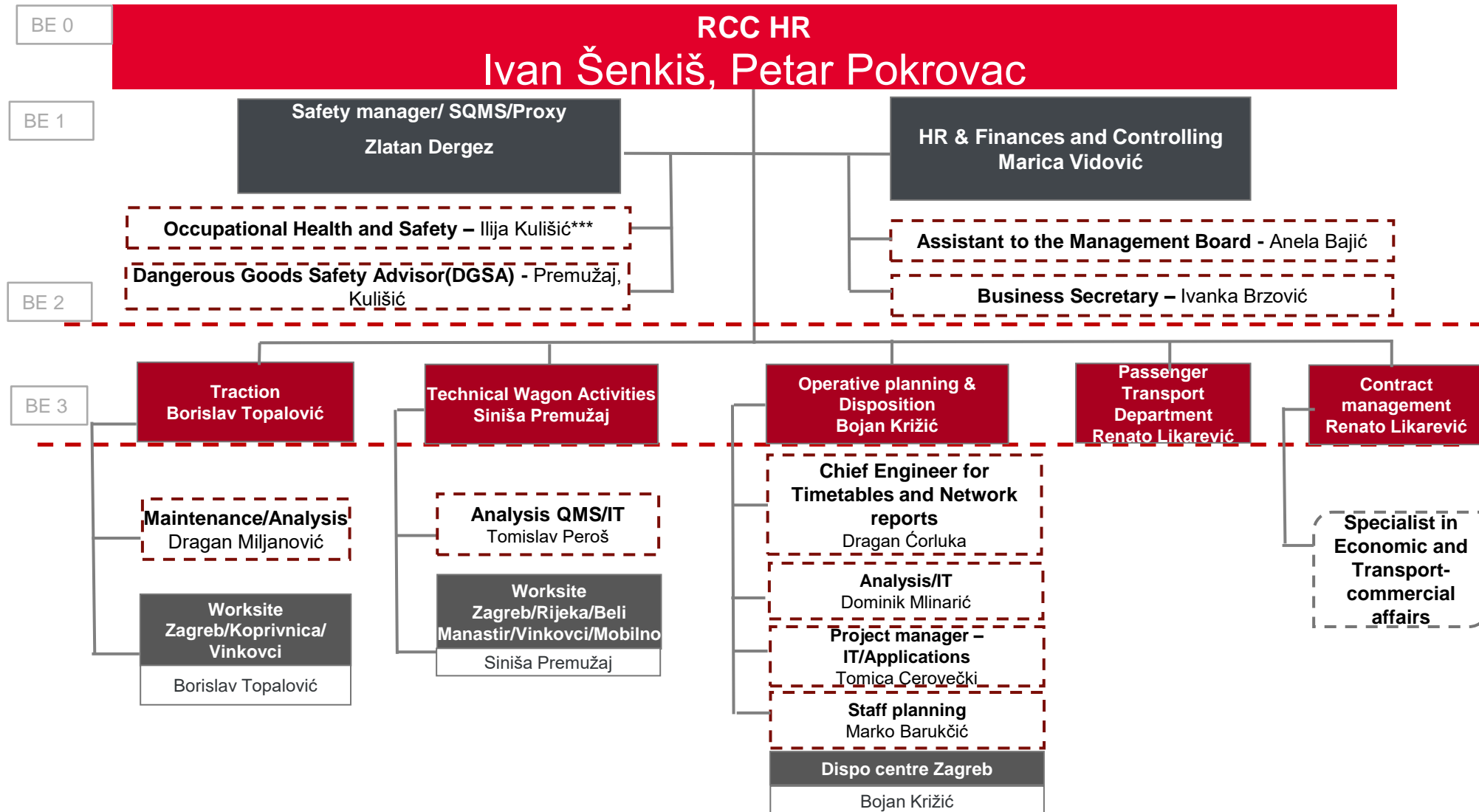
2023

Our first passenger
train

24/10/2023



General overview Rail Cargo Carrier – Croatia d.o.o.

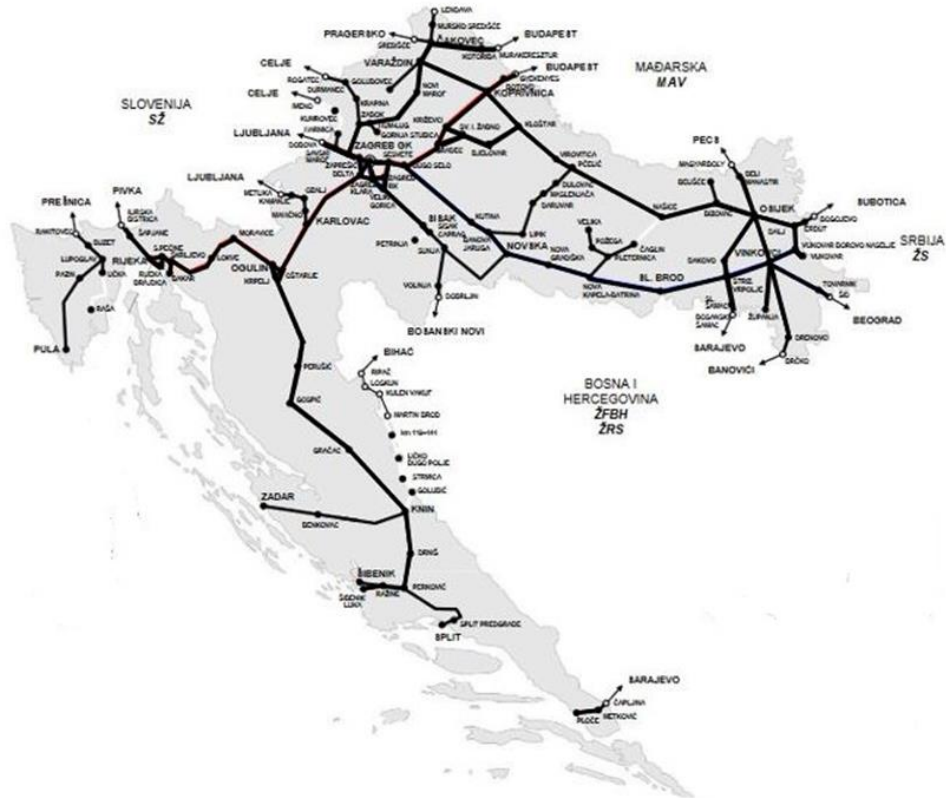


103 Employees on 01.10.2024



Productional areas

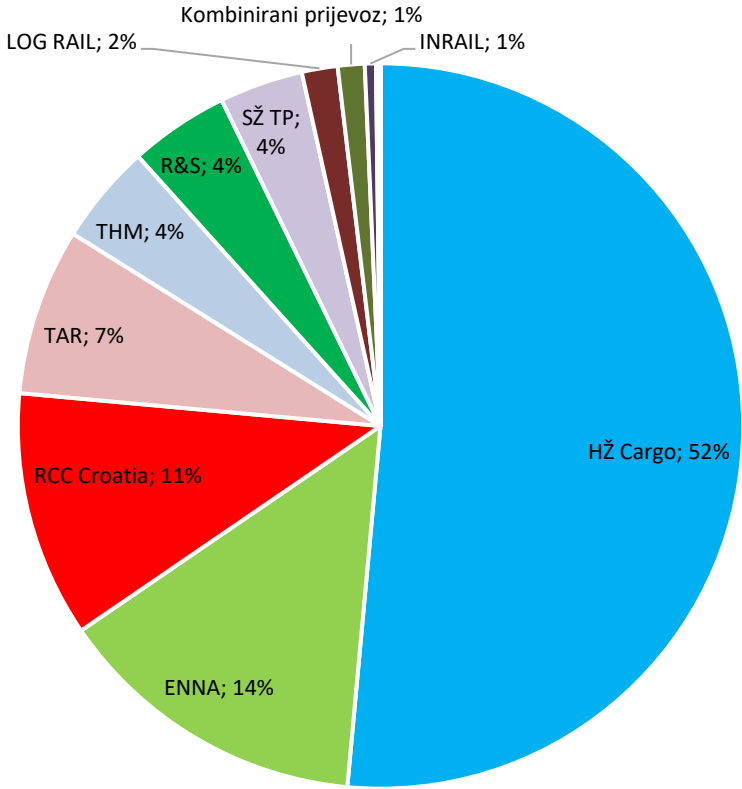
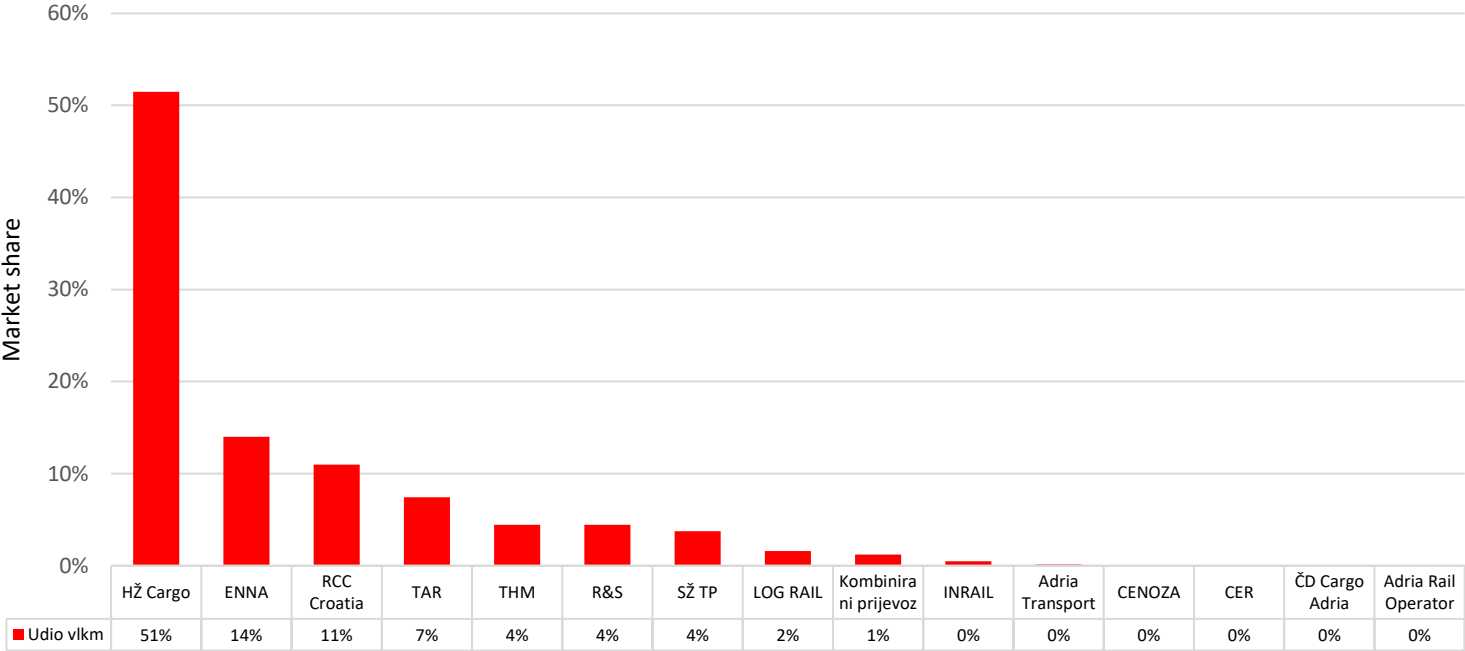
HŽ Infraestructure network



RCC-Croatia production network



Market share for 2023



Change of work technology at border stations with Hungary (Gyekenyes and Murakeresztur)

- **1st of March 2023**

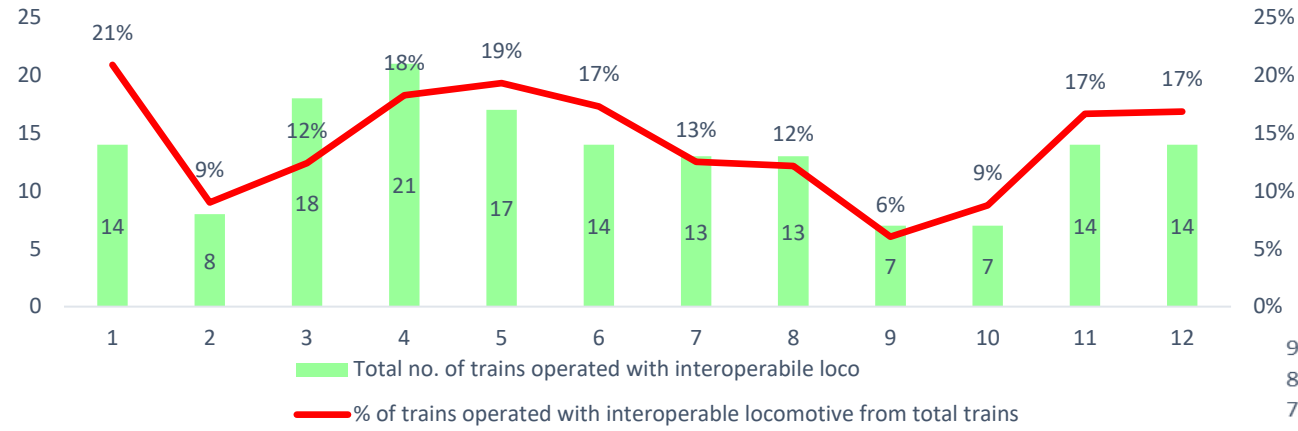
RCH staff performs technical and commercial handover of trains on behalf of RCC-HR

- **15th November 2023**

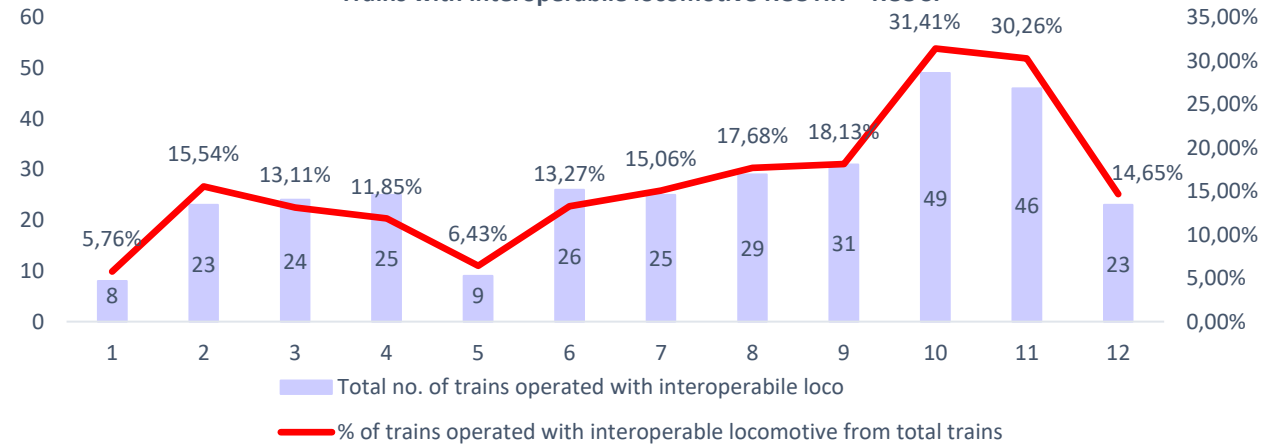
RCC HR staff performs technical and commercial handover of trains on behalf of RCH in station Beli Manastir

Interoperability

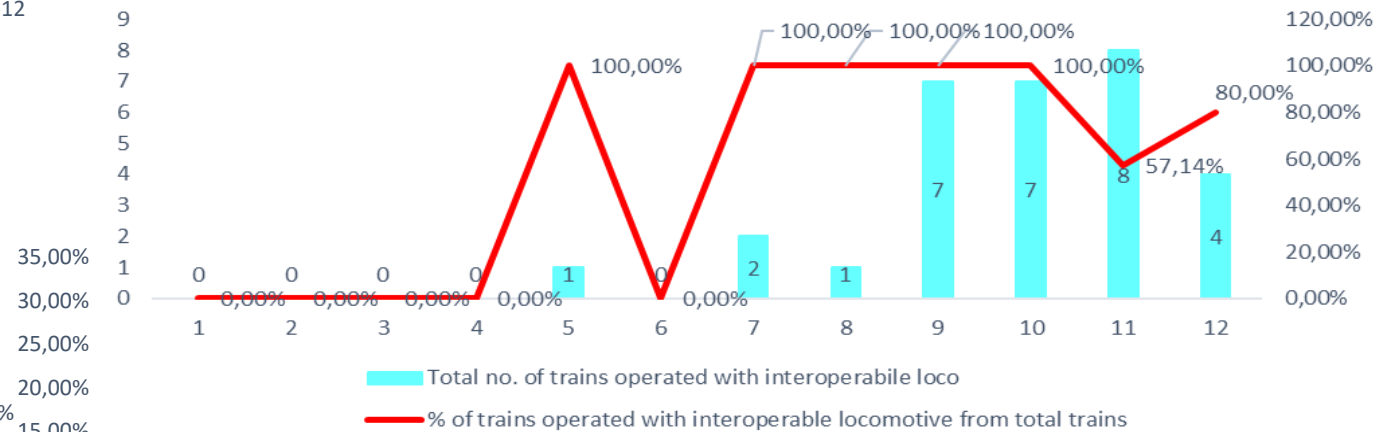
Trains with interoperable locomotive RCC HR - RCH



Trains with interoperable locomotive RCC HR - RCC SI



Trains with interoperable locomotive RCC HR - RCC RS



Strengths

- Flexibility to the demands of Sales
- Transport quality, especially at the transit transport
- Own solutions for the first and last mile in Croatia
- Access to the entire infrastructure network of Croatia

Weaknesses

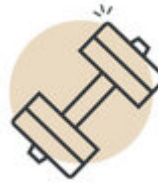
- Poor long-term resource planning
- Low efficiency of locomotives and TDs
- Dependence on people with key functions (lack of alternatives)

Opportunities

- Further development of the S route (SRB/HU-HR-SI-IT)
- Improving business relations with other Railway Undertakings
- Market growth through the port of Rijeka (containers and ore)
- Increasing of traffic between Rijeka and IM terminals in Serbia after start of production of Rail Cargo Carrier-Serbia

Threats

- Bad condition of the infrastructure and long-term construction works on the main lines
- Lack of human resources (TD, TI and DISPO)
- High share of ad hoc traffic
- Strong competition of other RUs





Thank you!

Milan Brkić
milan.brkic@railcargo.com